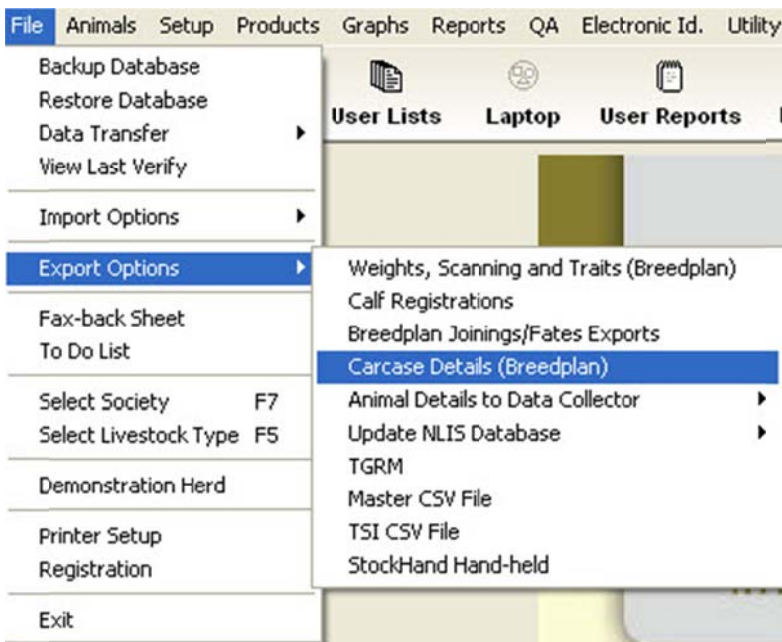




## Practical Tip: Exporting Carcase Data to Breedplan

### 1. File > Export Options > Carcase Details (Breedplan)

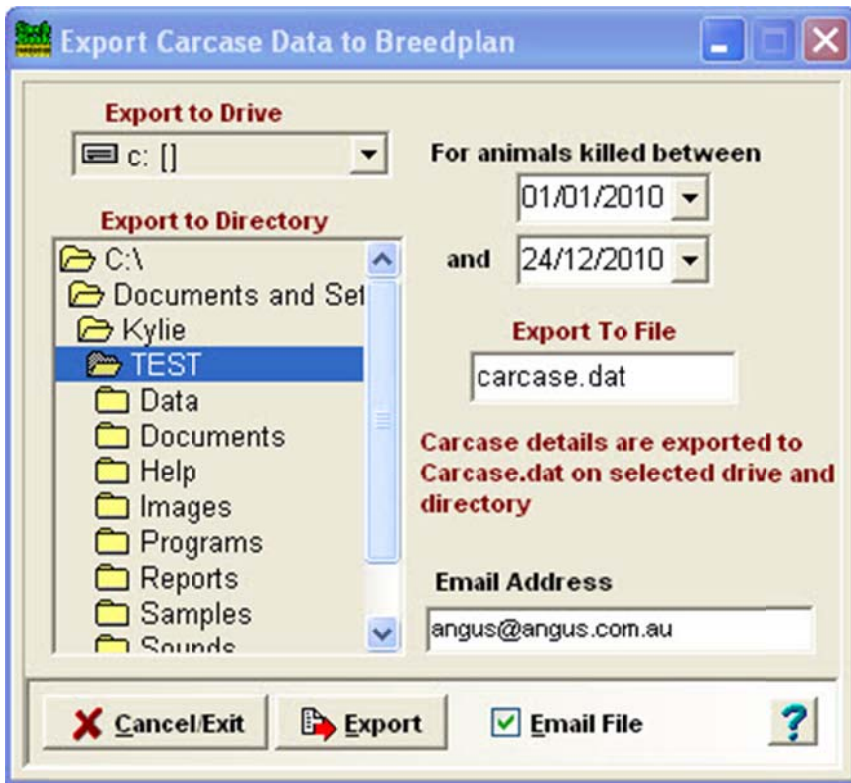


2. Choose the Drive and Directory to save the file to. The default file name is carcase.dat however you can change this if required.

3. Select the data you wish to export by specifying a kill date range.

4. You can elect to have the data emailed directly to the society by ticking the Email File button.

5. Click on Export to start the process.



*Note: It is important that the Carcase.dat file is not opened after it has been created. Opening this file will alter the way it is formatted and the society will not be able to read it.*